

HOMOLOGATION AND TECHNICAL SPECIFICATION UPDATE BULLETIN

HOMOLOGATION	PRD GALAXY	HOMOLOGATION NO.	100H
BULLETIN NO.	100H-3	BULLETIN DATE	6 July 2018
SUBJECT	PRD GALAXY: BOTTOM END, CARBURETTOR and REED VALVE UPDATES		

The information and specifications contained in this Homologation and Technical Specification Update Bulletin are to be read in conjunction with and form part of the homologation detailed herein.

Homologation Document Reference

Pages [15-19.]

PRD GALAXY ENGINE BOTTOM END

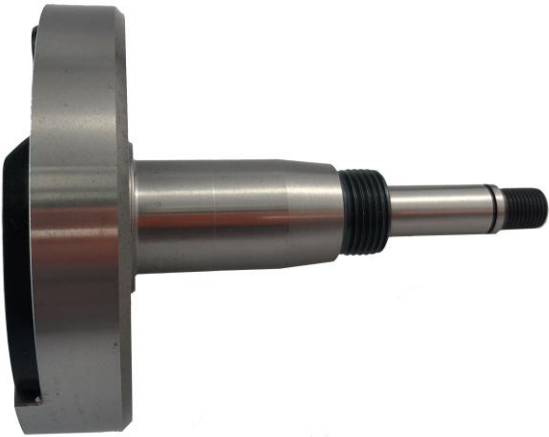
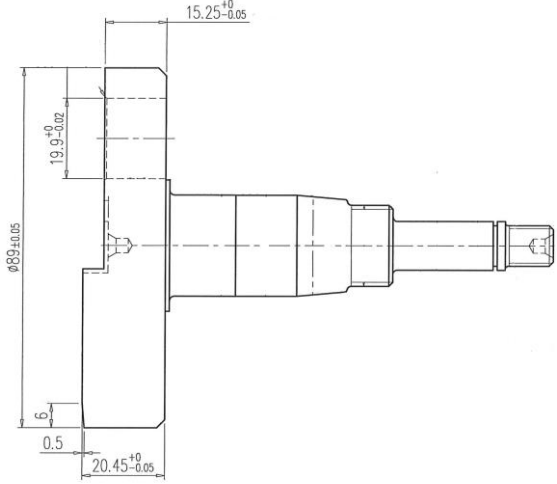
Details of Permitted Modifications


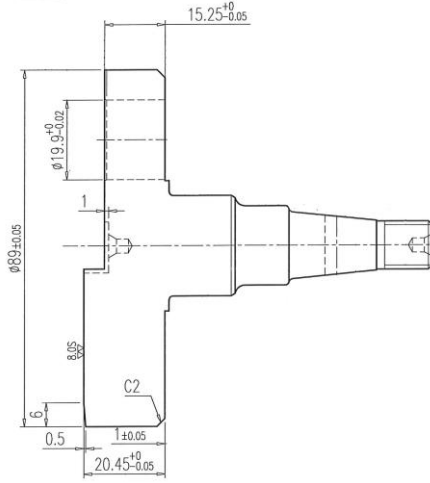
SGK are introducing 'Bottom End' 'Reed Valve' and minor Carburettor updates for the PRD Galaxy Engine. This document details the changes being implemented, details on why these are being implemented and technical specification for increased technical inspection.

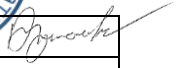
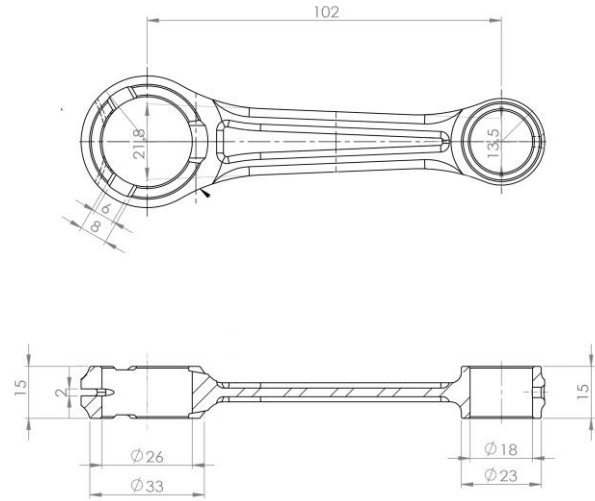
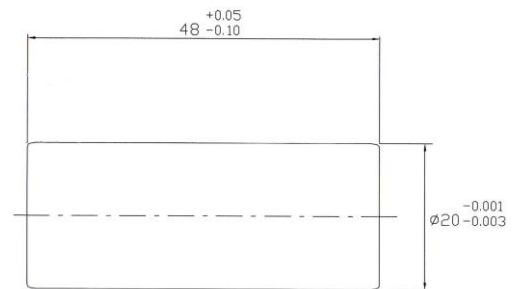
The change in the 'Bottom End' of the engine are designed to substantially increase the life of all components. The crankpin within the bottom end has been increased in size from 18mm to 20mm. Increasing the size of the crankpin requires the Crankshaft, Conrod, Big End Bearings, Big End Washers, Crankcase to be updated as well.

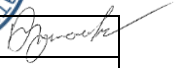
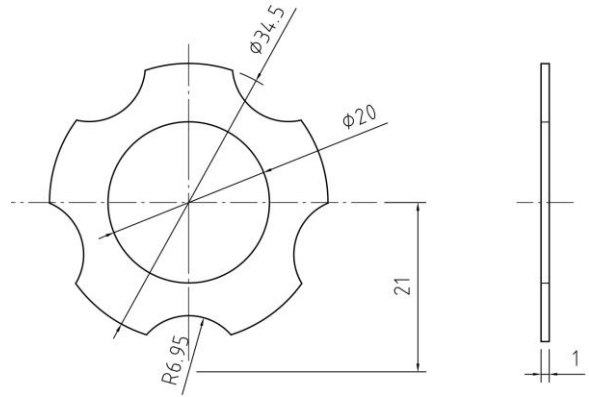
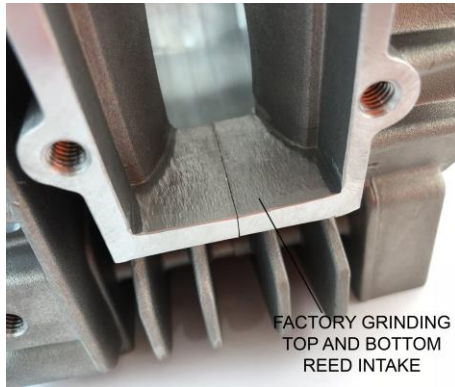
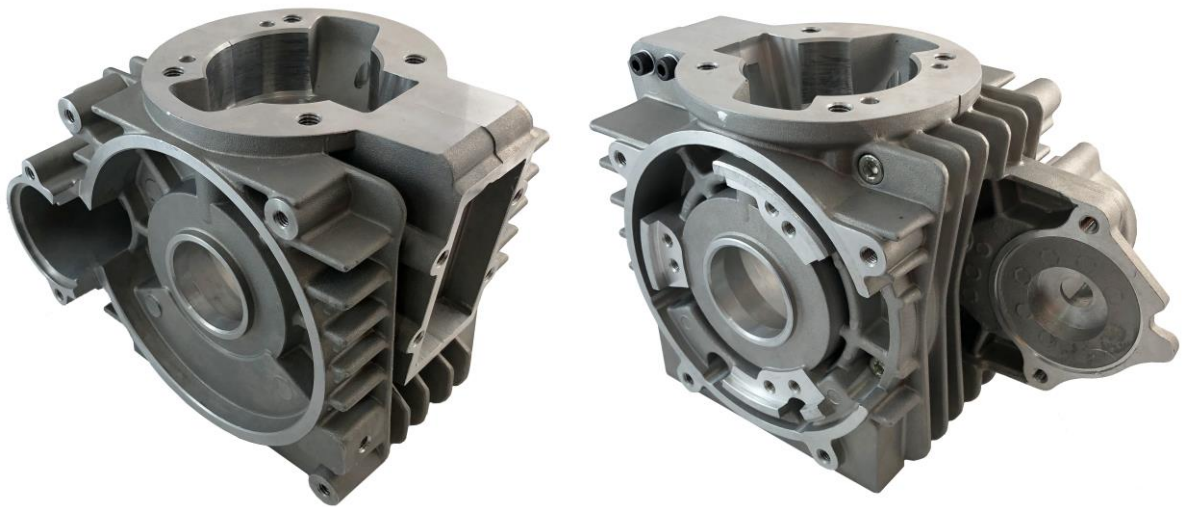
1. Transition to the 20mm Bottom end is recommended but not compulsory.
2. Both the 18mm 'Bottom End' and 20mm 'Bottom End' are eligible for competition.
3. The 20mm 'Bottom End' will become standard production internationally.
4. Galaxy Reed Block and reed manifold have also been updated. The new manifold allows the carburettor to be mounted straight making tuning simpler and easier. A minimum Reed Petal thickness is now specified.
5. Tillotson have also updated the Nozzle / Dump Tube in the HW-30X Carburettor to prevent the engine from leaning out under deceleration.
6. Cylinder head squish clearance shall be a minimum of 0.8mm measured using 2mm solder wire. The measurement shall be taken parallel with the piston pin both left and right. The average of the two measurements left and right must not be less than 0.8mm.

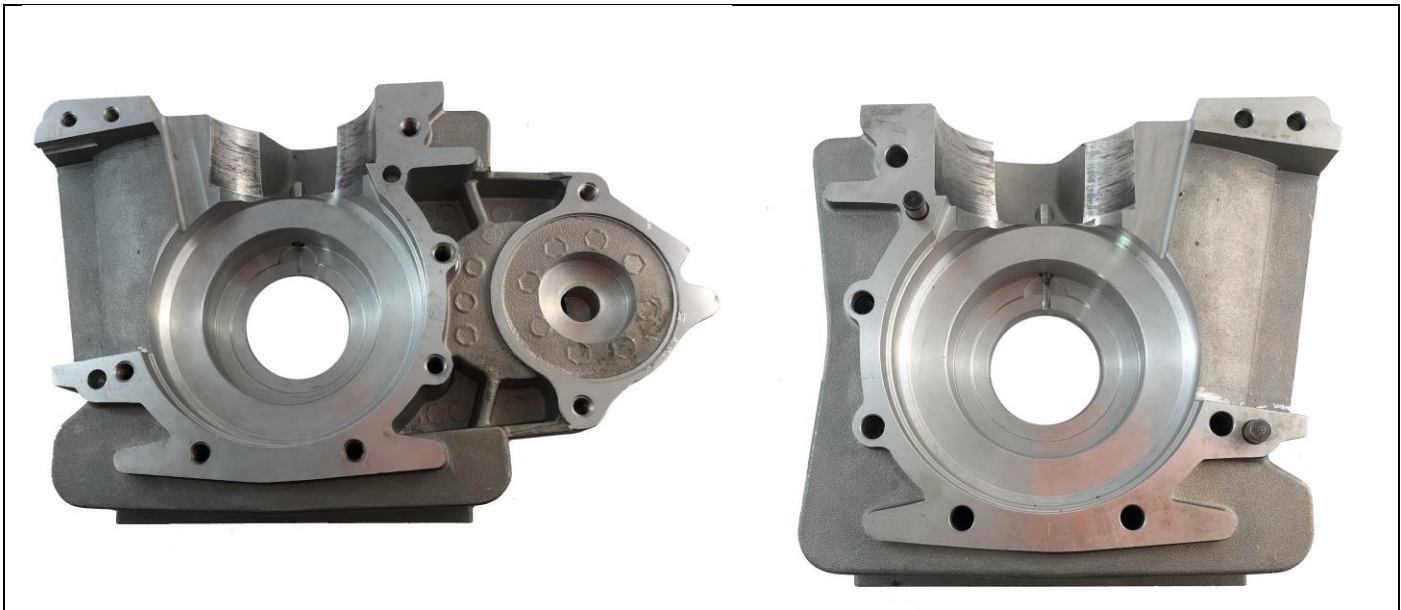
The updated components and the originally homologated components are permitted to be used.

RH CRANK HALVE	
PHOTO	DRAWING
	

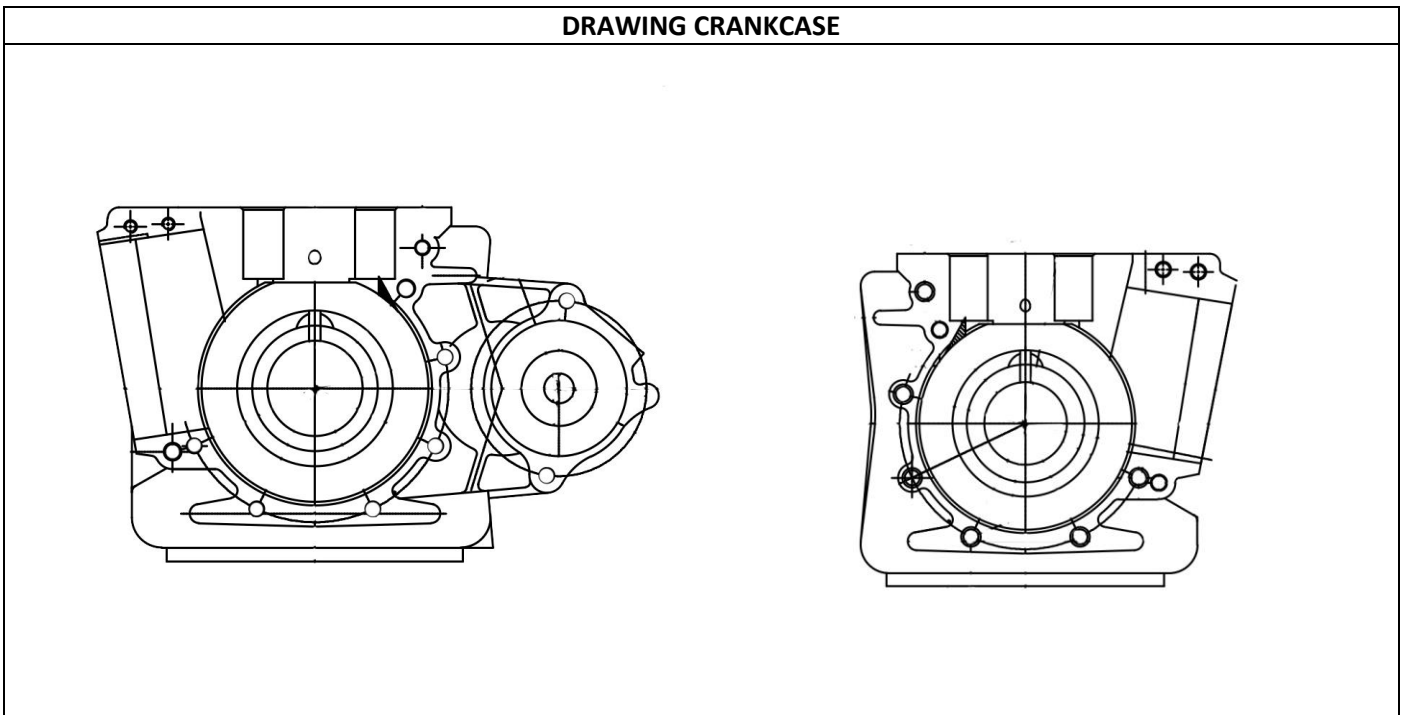
LH CRANK HALVE	
PHOTO	DRAWING
	


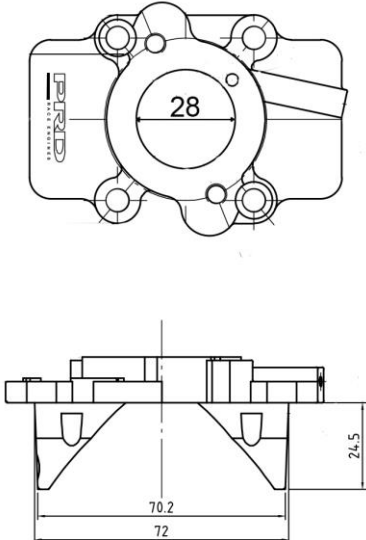

CONROD
PHOTO
DRAWING

20MM CRANK PIN
PHOTO
DRAWING



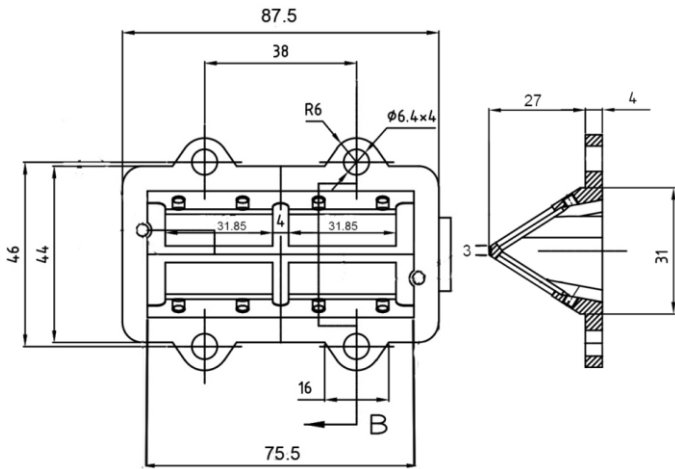

20MM CRANK WASHER
PHOTO
DRAWING

PICTURE CRANKCASE

 FACTORY GRINDING
 TOP AND BOTTOM
 REED INTAKE



DRAWING CRANKCASE



REED MANIFOLD	
PHOTO	DRAWING
	

REED BLOCK	
PHOTO	DRAWING
	 <p style="text-align: center;"> Reed Petal Minimum thickness 0.20 Reed Petal Must Be Marked with the PRD logo </p>

TILLOTSON HW-30X

PHOTO NOZZLE / DUMP TUBE

