



GRADING OF OFFICIALS POLICY

Policy number	OP-004	Version	V1
Drafted by	NOC	Approved by Board on	8 November 2016
Responsible person	CEO	Scheduled Reviewed	As Required
Status	Public		

INTRODUCTION

This policy sets out the Grading Classifications and Minimum Essential Officials required at all levels of Karting Australia (KA) Competition within Australia from 2017 onwards.

PURPOSE

The policy will provide clear guidance to State and Territory Associations, officials Co-ordinators, Clubs and Organisers when providing Officials at all levels of Competition thereby helping to create sporting integrity and enjoyment and a safe racing environment for Competitors so as to fairly and consistently apply the rules.

APPLIES TO

The policy applies to all Key National Officials, State Official’s Coordinators, State Technical Officers, State and Territory Associations, Affiliated Clubs, and all grades of Officials.

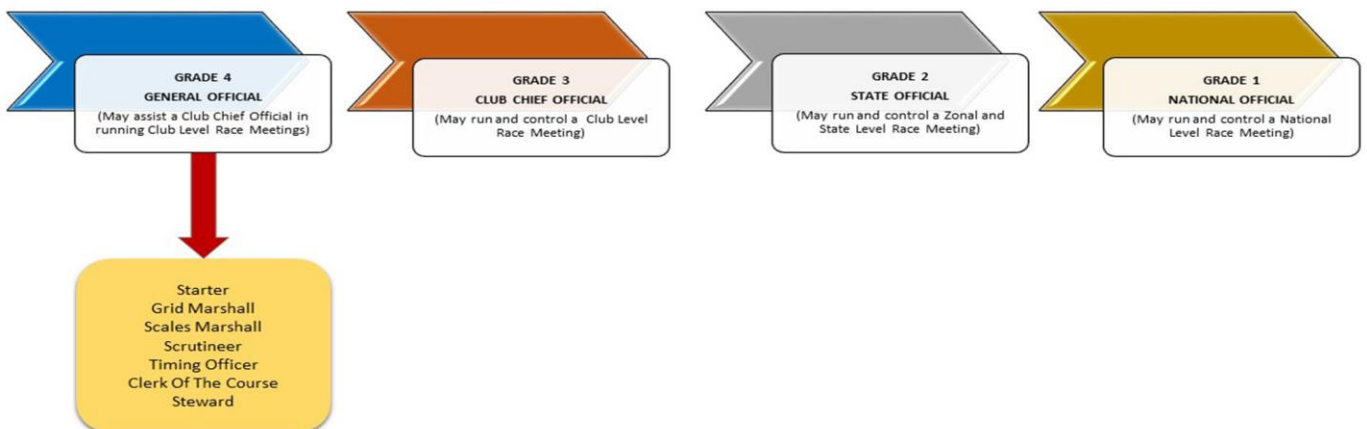
OBJECTIVES

This policy is intended to achieve these objectives:

1. Simplify and align the grading system with world’s best practice.
2. Enable Club Level meetings to be more easily conducted using locally available Officials.
3. Provide a clear pathway for all Officials.
4. Reinvigorate Officials to become active in the running of Club Meetings.

POLICY

OFFICIALS TRAINING PATHWAY



OFFICIAL'S GRADING

GRADE 4 - GENERAL OFFICIAL:

A "General Official" may assist a Club Chief Official in running a Club Level Meeting.

GRADE 3 - CHIEF CLUB OFFICIAL:

A "Grade 3- Chief Club Official" may run and control Club Level Meetings.

GRADE 2 – STATE OFFICIAL:

A "Grade 2- State Official" may run and control State and Zonal Level Meetings and all subordinate level Meetings.

GRADE 1 – NATIONAL OFFICIAL:

A "Grade 1- National Official" may run and control a National Level Meeting and all subordinate level Meetings.

Note: All subordinate Grades of Officials may (and are encouraged to) officiate at higher levels of Race Meetings under the supervision of higher graded Officials.

MINIMUM ESSENTIAL OFFICIALS REQUIREMENTS

	CLUB	STATE AND ZONAL LEVEL COMPETITION	NATIONAL LEVEL RACE MEETINGS	
Official	Club Competition	State Cup, State Series, Zonal Competition	State Championship	National Championship, National Series National Cup
Chief Steward	1 x Grade 3 or higher	1 x Grade 2 or higher	1 x Grade 1	1 x Grade 1
Steward		1 x Grade 3 or higher Plus at least 2 others one of which must be at least a Grade 4 Official	2 x Grade 2 or higher Plus at least 2 others one of which must be at least a Grade 3 Official	2 x Grade 2 or higher Plus at least 2 others - one of which must be at least a Grade 3 Official
Clerk of Course	1 x Grade 4 or higher	1 x Grade 2 or higher Plus at least 2 others one of which must be a Grade 3 or higher	1 x Grade 2 or higher Plus at least 2 others one of which must be a Grade 3 or higher	Race Director Plus 1 x Grade 1 Plus at least 3 others at Grade3 or higher
Scrutineer	1 x Grade 4 or higher	1 x Grade 3 or higher Plus at least 1 other one at Grade 4 or higher.	1 x Grade 2 or higher Plus at least 2 others one of which must be a Grade 3 or higher	1 x Grade 1 Plus at least 3 others at Grade3 or higher

AUTHORISATION

8 November 2016

Policy Manager

Manager – CEO