

HOMOLOGATION AND TECHNICAL SPECIFICATION UPDATE BULLETIN

HOMOLOGATION	IAME KA100 ReedJet	HOMOLOGATION NO.	106H
BULLETIN NO.	106H-5	BULLETIN DATE	19 August 2016
Subject	Carburettor		

The information and specifications contained in this Homologation and Technical Specification Update Bulletin are to be read in conjunction with and form part of the homologation detailed herein.

EXPLANATORY NOTES SUPPLIED BY THE MANUFACTURER’S REPRESENTATIVE.

IAME have homologated the Tillotson HW33A for use on the KA100 engine.

The purpose of this Bulletin is to clarify its permitted usage in National level events prior to 1 January 2017, permitted mounting to the engine, permitted modifications to provide more secure attachment of the air box to the carburettor and to specify the additional kits that may be used with the HL-398A carburettor.

Homologation Document Reference

1. **Appendix A to KA100 Homologation Documents**
- E. **Carburettor**
3. In addition to the specified Tillotson carburettor kit (DG-7HL) the following carburettor kits are permitted to be used with the HL-398A carburettor: Tillotson Kit DG-2HW (half kit) and Tillotson Kit RK-11HW (full kit).
5. It is permitted to mount the carburettor (both the HW33A and the HL-398A) either top side up or upside down so as to provide easier access to the jets for the Driver.



A. TOP SIDE UP MOUNTING



B. UPSIDE DOWN MOUNTING

6. Airbox Attachment Permitted Modifications

Alternative 1 Rubber Removal – Curved Shape

The external part of the mounting rubber for the airbox may be modified by the removal of a small amount of material in a curved shape sufficient to allow a more secure fitment of the rubber to the carburettor.



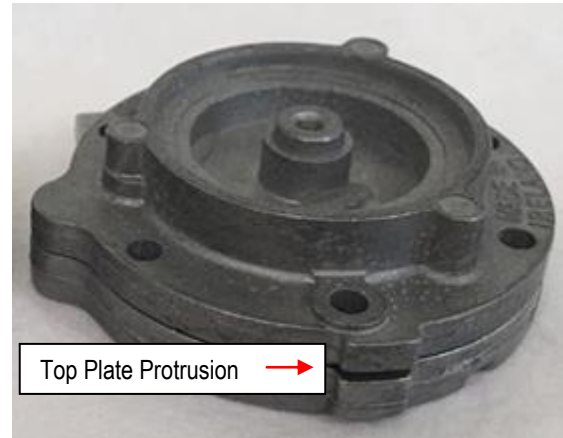
A. Left Hand – Modified Right Hand – Unmodified



B. Rubber cut in a curved shape to fit around the carburettor top plates

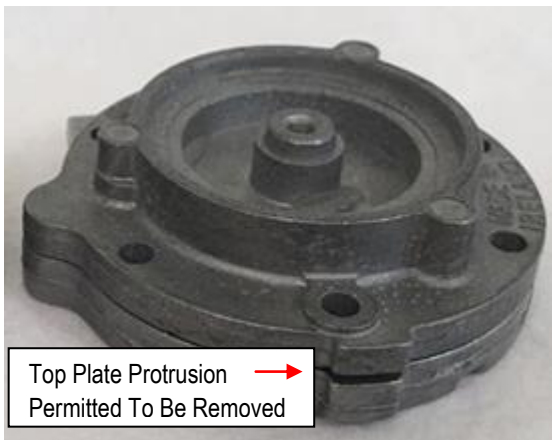
Alternative 2 Airbox Rubber Removal - Notch

The external part of the mounting rubber for the airbox may be modified by the removal of a small amount of material – a notch that will fit around the protrusion on the top plate of the carburettor sufficient to allow a more secure fitment of the rubber to the carburettor.



Alternative 3 Carburettor Top Plate Protrusion Removal

The protrusion on the carburettor Top Plate may be removed by filing it down so as to achieve a smooth radius of the top plate as shown. In this instance it is not necessary to modify the rubber attachment at all.



A. Top Plate Showing Protrusion



B. Top Plate with Protrusion Removed

Details Of Permitted Use Of the HW33A Carburettor

1. Permitted for general use from 1 September 2016.
2. Not eligible for use in Australian Kart Championship or State Championship events in 2016.
3. Permitted for use in all other events from 1 September 2016 including Race Of Stars (National Cup Event).



Les Allen
National Technical Commissioner
19 August 2016